

Colour Glaze

codex Villa Colore

Decorative and protective glaze for colour design-work with codex Villa Rustica

Description:

codex Villa Colore is a high-quality glaze that can be diluted with water for creative designs on wall and ceiling surfaces. With codex Villa Colore, high-class and individual surface finishes can be produced in the Mediterranean style in a range of different colours. As a system-substrate, codex Villa Rustica is used. Using different application techniques and different numbers of coats of the codex Villa Colore glaze, individual surface effects can be achieved. After drying, it leaves a light satin finish. For interior and exterior use.

Suitable for / on:

- ▶ walls and ceilings
- ▶ presentation areas, such as e.g. entrance halls, restaurants, banks, etc.
- ▶ living areas
- ▶ damp areas, bathrooms
- ▶ indoor pool areas
- ▶ smooth and textured surfaces
- ▶ renders
- ▶ fibreglass
- ▶ wood-chip or grained paper coated with dispersion paint
- ▶ textured wallpaper
- ▶ a system component of codex Villa Rustica



Product Properties / Benefits:

codex Villa Colore is a UV-resistant glaze that has permanently mould-inhibiting constituents and that can be diluted with water. codex Villa Colore has excellent covering power and is water vapour permeable. Due to these properties, codex Villa Colore is also suitable for use in damp areas and indoor pool areas.

- ▶ Good covering power
- ▶ Suitable for damp areas
- ▶ Rapid drying
- ▶ Vapour permeable
- ▶ Can be diluted with water
- ▶ Interior and exterior use

Technical Data:

Packaging:	plastic bottle
Packsize:	1 litre
Shelf life:	12 months
Consumption:	50 – 100 ml/m ²
Working temperature:	8 °C to 30 °C / 46 °F to 86 °F



Colour No. 800 transparent



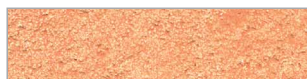
Colour No. 841



Colour No. 803



Colour No. 846



Colour No. 826



Colour No. 861



Colour No. 829



Colour No. 868

Substrate Preparation:

On surfaces finished with codex Villa Rustica, after adequate drying, codex Villa Colore can be applied direct.

Refer to the Product Data Sheets for other codex products used.

Application:

1. Before use, shake the codex Villa Colore container well.
2. Dilute codex Villa Colore with 25 – 50% water as required.
3. Application is with e.g. a glaze brush and is individual, e.g. with circular or straight brush-strokes. Using alternative application techniques and tools, other surface finish effects can be achieved.
4. After approx. 1 hour of drying time, a second coat of the desired colour can be applied.

Important:

Always build up colour layers from light to dark.

5. Clean tools with water after use.

Consumption:

codex Villa Colore	50 – 100 ml/m ²
--------------------	----------------------------

Important Notes:

- ▶ Shelf life minimum 12 months in original packaging when stored in cool, dry and frost-free conditions. Tightly reseal opened packaging and use the contents as quickly as possible.
- ▶ Do not use on surfaces that are in permanently wet areas or are exposed to direct spray-water.
- ▶ During application and drying, substrate and air temperature should be between 8 °C and 30 °C / 46 °F and 86 °F and the relative humidity should be between 30% and 75%.
- ▶ codex Villa Colore can be used with no problem on various substrates, e.g. on grained paper with dispersion paint, textured papers, fibreglass and renders.
- ▶ Due to the "individual handwriting", sample surfaces on project work that will later be carried out over the entire surface, must be completed personally by the installer.
- ▶ The unique appearance and the special effects of the decoratively designed surfaces will, in the first instance, be produced with the influence of light. To evoke the effect in each respective area, we recommend to the installer that he should present the technique to the customer by means of sample boards in the desired colours and in the proposed area. Only in this way can "light and effects" be assessed and a false impression be avoided.

Protection of the Workplace and the Environment:

Solvent-free. Non-flammable. Requires no special protection or precautions in general use. Use of barrier cream and ventilation of the work area are recommended.

Disposal:

Where possible, collect all product waste and re-use. Do not allow dispersal into drains, sewers or ground. Empty, scraped and drip-free plastic containers are recyclable. Containers with liquid residue, as well as the liquid product, are classed as Special Waste. Dried product residues are classed as Construction Waste.